

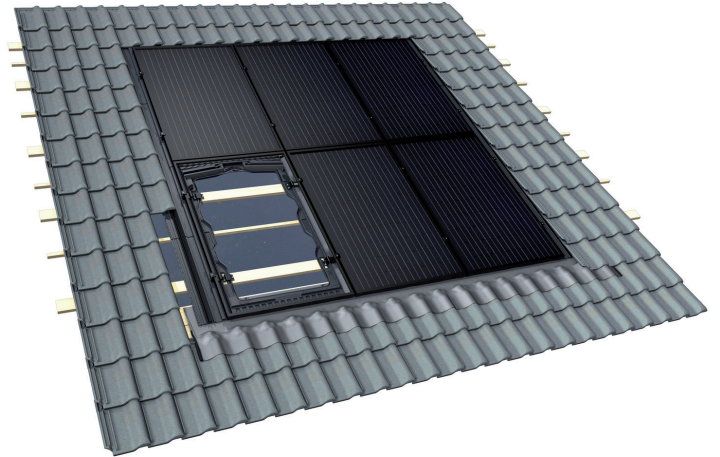
EASY ROOF INTEGRATION

IN ROOF MOUNTING SYSTEM FOR SOLAR PANELS

THE CONCEPT

EASY ROOF INTEGRATION is a revolutionary in roof mounting system (BIPV) for photovoltaics panels.

An unique overlapping and interlocking system with no seal, no cut and no EPDM, and no plastic penetration. EASY ROOF INTEGRATION fits just like tiles.



Compatible with the biggest brands!

- JINKO SOLAR
- SOLARWATT
- LONGI SOLAR
- EURENER
- JA SOLAR
- DMEGC
- SUNPOWER...



Extended compatibilities with new solar panels sizes

THE MOST RELIABLE BIPV SYSTEM ON THE MARKET

CHARACTERISTICS

Concept	Fully modular, unique overlapping and inter-locking system
Material	<ul style="list-style-type: none"> • Polypropylene copolymer with additives. • 100% recyclable: No waste in the production line
Applications	New Build, and retrofit projects, Residential and Commercial

PRODUCT ADVANTAGES

Reliability	<ul style="list-style-type: none"> • Watertightness is ensured by a patented overlapping process. Highly secured clamping with strong torque • NO seal, NO EPDM
Performance	<ul style="list-style-type: none"> • UV, hail stones, snow and wind resistant (climate zone up to zone 4: snow and wind according to NV65 and Eurocodes, cos. Fully compliant Part L (UK) • Optimised ventilation under each module for maximum performance
Compatibility	<ul style="list-style-type: none"> • Roofs: Pitched roofs 10° to 50° • Modules (l*w*h): Length: 1680 to 2000 mm Width: <ul style="list-style-type: none"> - 1031-1050 mm (frame 1031-1050) - 1051-1070 mm (frame 1051-1070) - 1091-1100 mm (frame 1091-1100) - 1131-1150 mm (frame 1131-1150)



ADVANTAGES

Storage	<ul style="list-style-type: none"> • Light, easy storage, handling and carriage
Installation	<ul style="list-style-type: none"> • Any layout in portrait style, pyramidal installation • No cut, top flashing is built to the tray • Roof space maximisation, ridge to edge installation • Easy cable management • Very fast installation
Maintenance	<ul style="list-style-type: none"> • Each panel can be individually replaced or changed • Easy access to all electrics within minutes
Durability	<ul style="list-style-type: none"> • The concept separates the clamping process to the water-tightness process to guarantee longevity of the installation



This documentation supersedes all previous versions. This document is not contractual and may be changed at any time (see current product data sheets on our Web site www.edilians.com). The photographs present suggestions and are not contractual. Edilians S.A.S., registered capital € 16,227,700, Lyon company register B 449 354 224, registered office 65, chemin du Moulin Carron, 69570 Dardilly, France / © 2023 Edilians. Copyright reserved. Photo credits: © Betty Garcia.